

CORE PURPOSE & VALUES

CORE PURPOSE

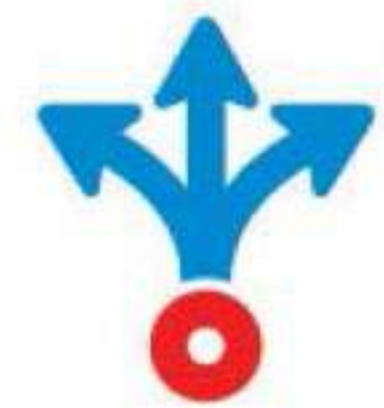


Be a trusted partner for people & society and improve quality of life by providing sustainable solutions

CORE VALUES



Build Enduring Relationships



Be a Trendsetter



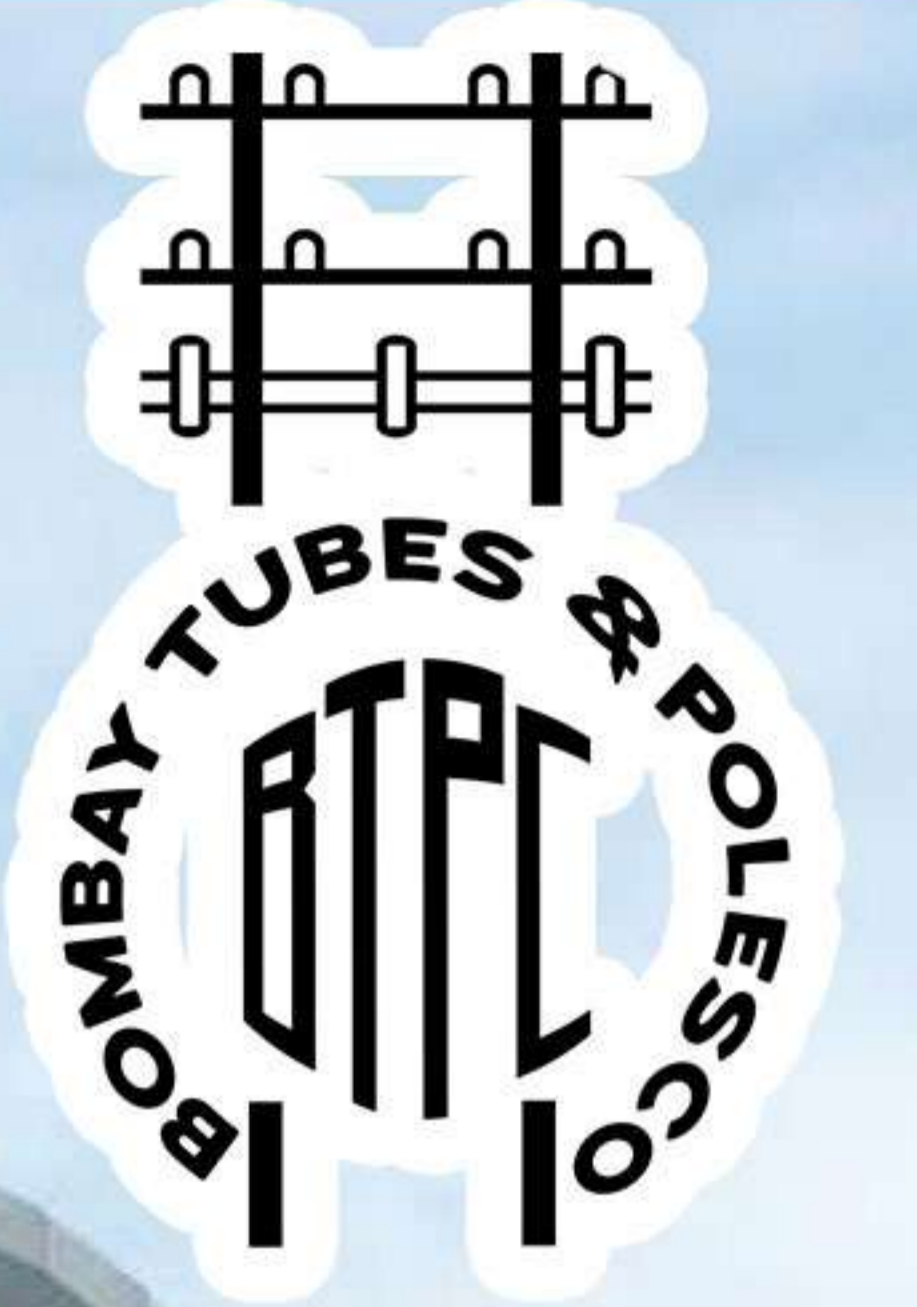
Be Passionate About Excellence



Be Proactive



Drive Execution



CORPORATE OVERVIEW



50 + PLUS

EMPLOYEES

60 PLUS

CLIENTS

MANUFACTURER

NATURE OF
BUSSINESS

1954

YEAR OF
ESTABLISHMENT

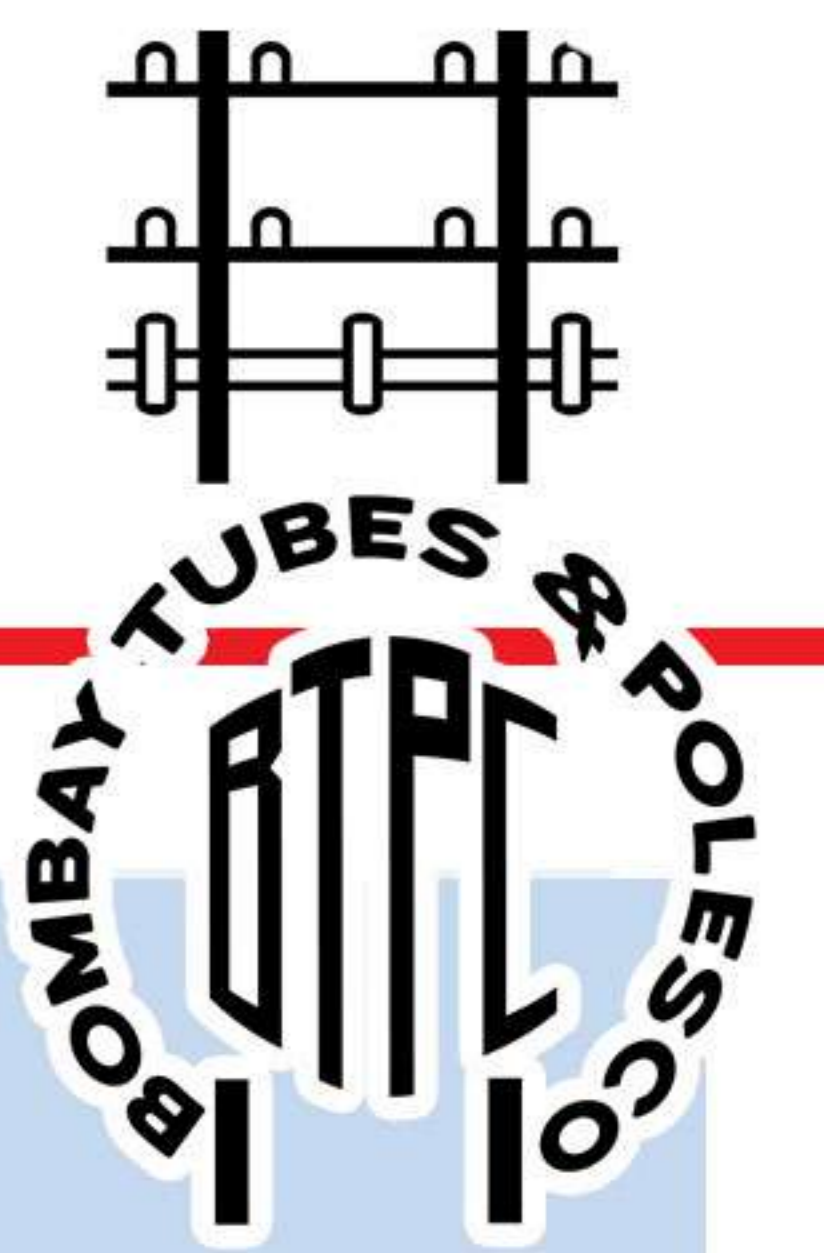
MUMBAI

CORPORATE-
OFFICE

KHOPOLI,MH

FACTORY
ADDRESS

GROUP BUSINESSES



METAL POLE



- HIGH MAST LIGHTENING METAL POLE
- DOUBLE ARM STREET LIGHT METAL POLE
- SINGLE ARM GARDEN LIGHTING METAL POLE
- GARDEN LIGHTING METAL POLE
- GALVANIZED MS METAL POLE
- TRAFFIC SIGNAL METAL POLE

MS BEAM



- MS BEAM ,MS RAIL BEAM
- D SHAPED
- USAGE RAILWAY TRACK
- BOTH MILD STEEL MATERIAL
- RUST RESISTANT
- LOW MAINTENANCE

MS CHANNEL



- MS CHANNEL
- MILD STEEL MATERIAL
- USAGE CONSTRUCTION
- HIGH QUALITY
- U-SHAPED
- POLISHED

METAL PIPE



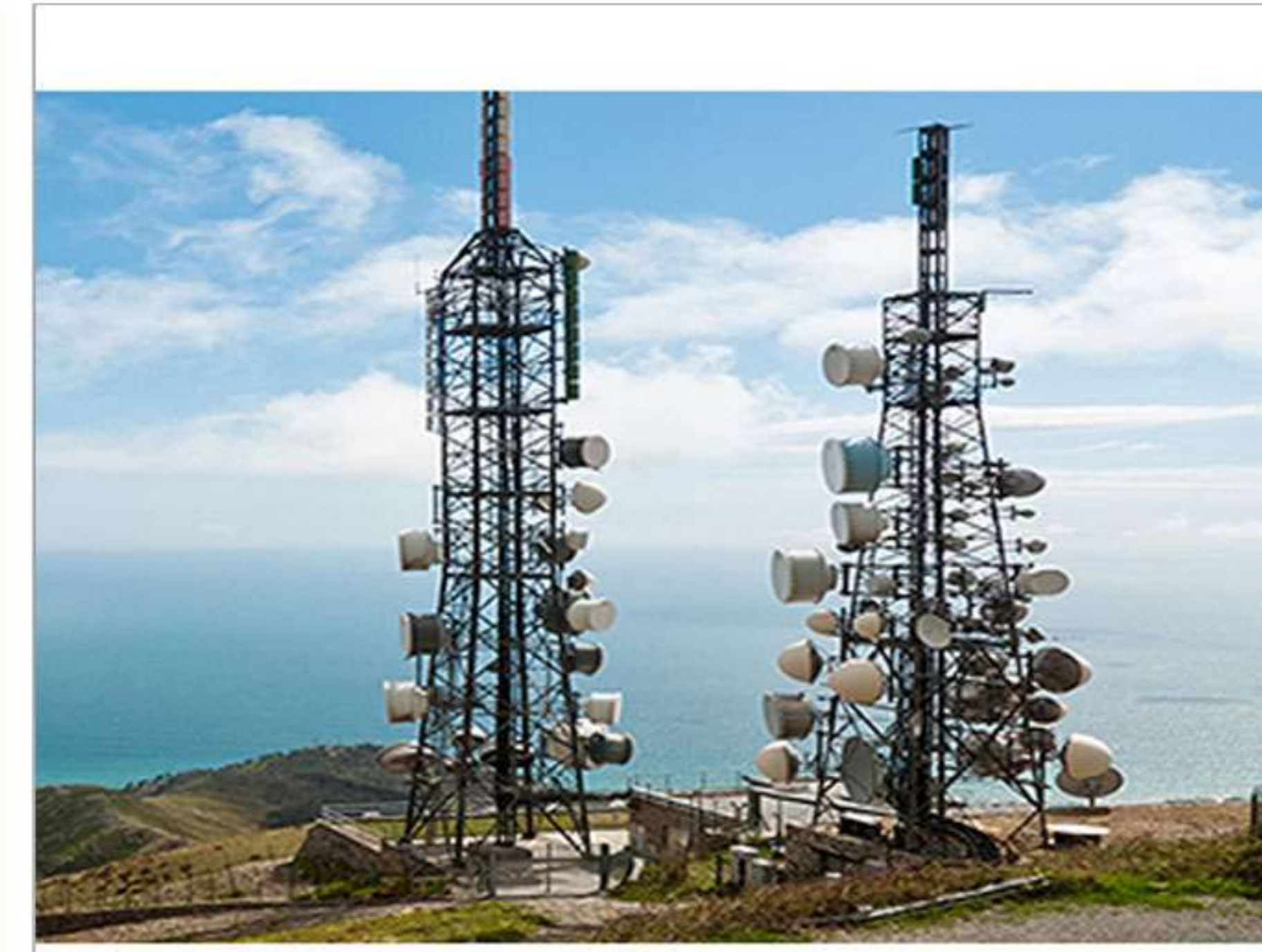
- ERW METAL PIPE
- MS SEAMLESS METAL PIPE
- MS METAL PIPE
- MILD STEEL MATERIAL
- ROUND SHAPE
- SURFACE TREATMENT POLISHED

JUNCTION BOX



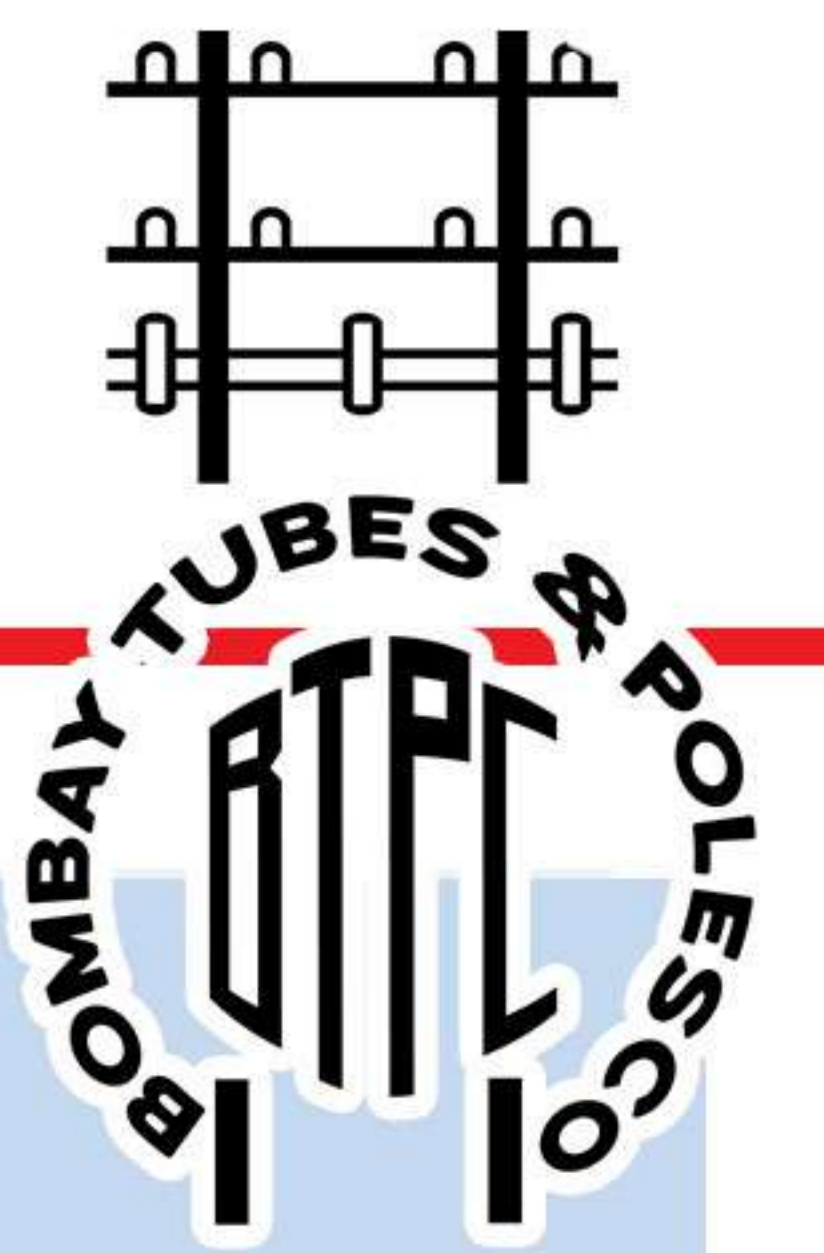
- ELECTRICAL ENCLOSURE JUNCTION BOX
- FLAME-PROOF,WEATHER-PROOF
- LOOSE PACKAGING TYPE
- SQUARE SHAPE
- MILD STEEL MATERIAL

MONOPOLE TOWER



- MONOPOLE TOWER
- TELECOM INDUSTRY
- MILD STEEL MATERIAL
- SURFACE FINISH POLISHED

GROUP BUSINESSES



MS ANGLE



- MST SHAPE ANGLE
- USAGE FOR CONSTRUCTION
- MILD STEEL MATERIAL
- SURFACE FINISH HOT DIP GALVANIZED

ERW PIPES



- ERW PIPES
- ROUND SHAPED
- COLD DRAWN TECHNIQUE
- STAINLESS STEEL, NICKEL ALLOY
- CARBON STEEL MATERIAL

MS RAILWAY POLES



- MS RAILWAY POLES
- MS MATERIAL
- USAGE RAILWAY LINES
- MILD STEEL MATERIAL
- SQUARE-SHAPED
- COATED FINISH

GALVANISED PIPES



- GALVANISED PIPES
- CUSTOMIZED SIZE
- GALVANIZED SURFACE TREATMENT
- ROUND SHAPE
- SURFACE TREATMENT POLISHED

SEAMLESS PIPE



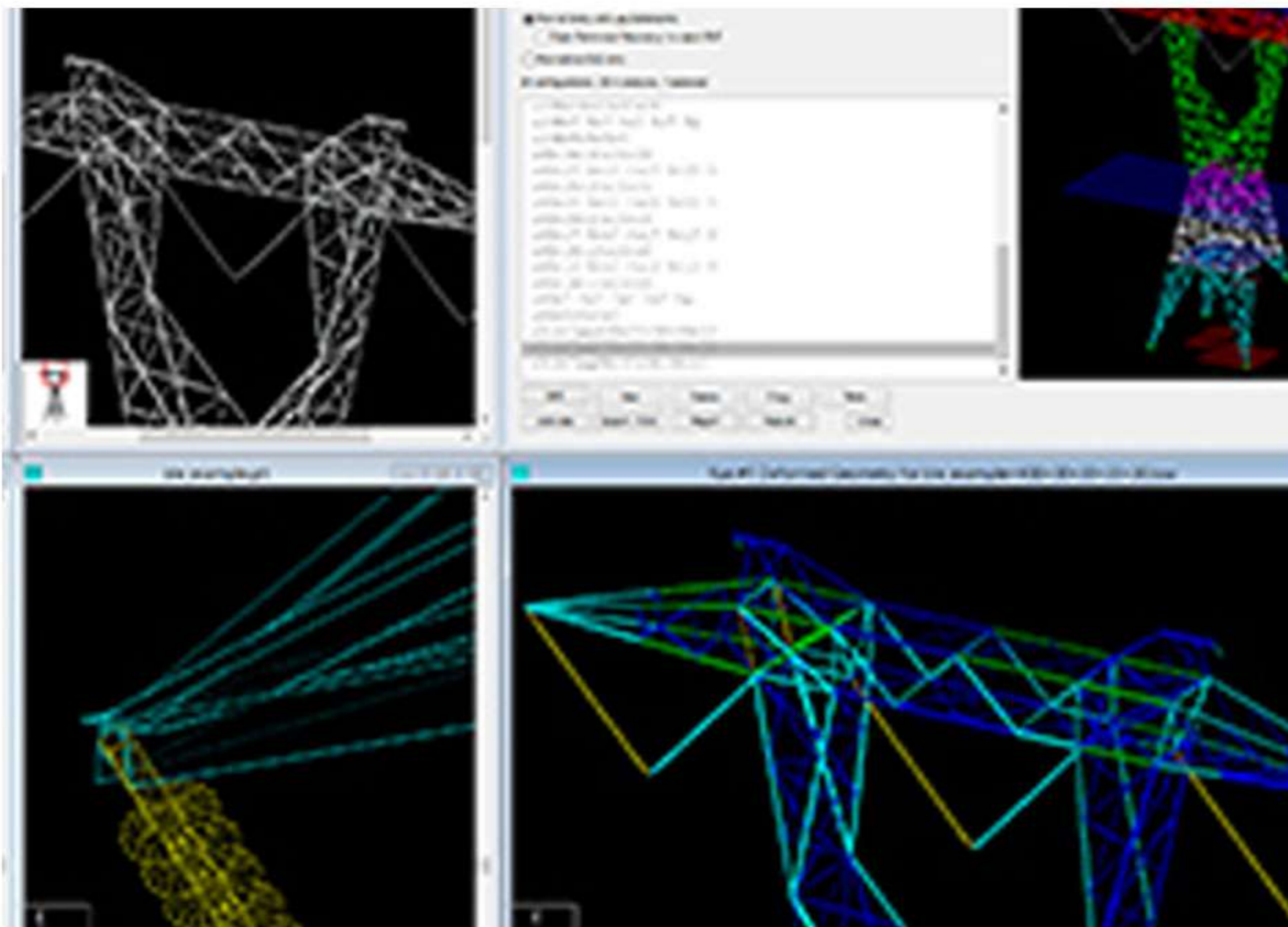
- SEAMLESS PIPE
- SIZES IN INCHES
- ROUND SHAPE
- STAINLESS STEEL MATERIAL

PRE-GALVANISED PIPES



- PRE-GALVANISED PIPES
- ROUND SHAPE
- STAINLESS STEEL MATERIAL
- SURFACE FINISH POLISHED

OUR PROJECTS



DESIGN ENGINEERING



TOWER TESTING



LATTICE TOWERS



CONDUCTORS



MONOPOLES



TRANSMISSION LINES

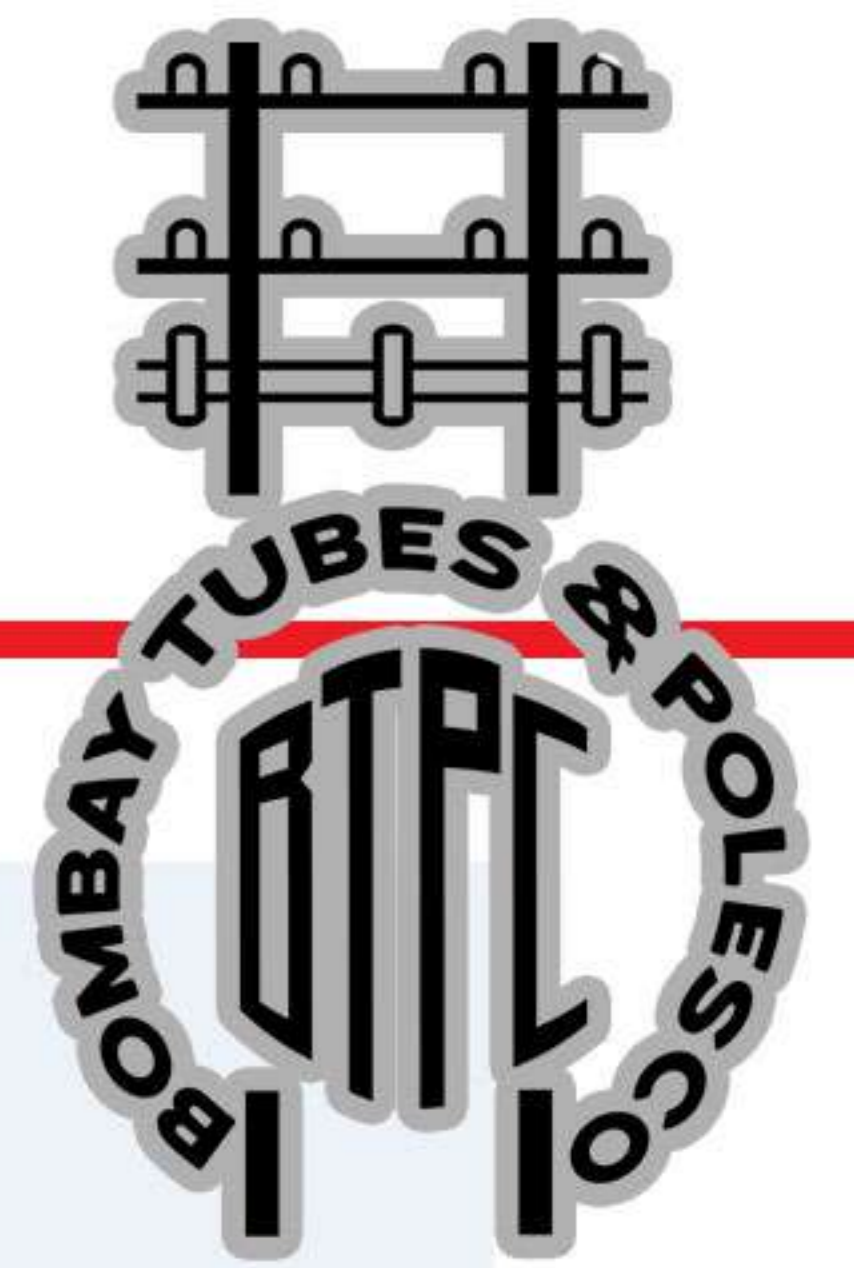


SUBSTATIONS



DISTRIBUTION

GROUP BUSINESSES



Powergen & Distribution



- Diesel Generator Sets
- Diesel Power Plants
- Distribution & Spares
- Global Training center
- Bangladesh Business
- Defence Applications

Defence



- Ground Power Units
- Auxiliary Power Units
- Repowering Solutions
- Indigenous Power Pack
- Containerised Living Accommodations

Solar



- Solar IPP
- Solar Manufacturing
 - Modules
 - MMS
- Solar EPC – Rooftop
- Solar Products

Hospitality



- Hotel in Phaltan, Pune

EPC



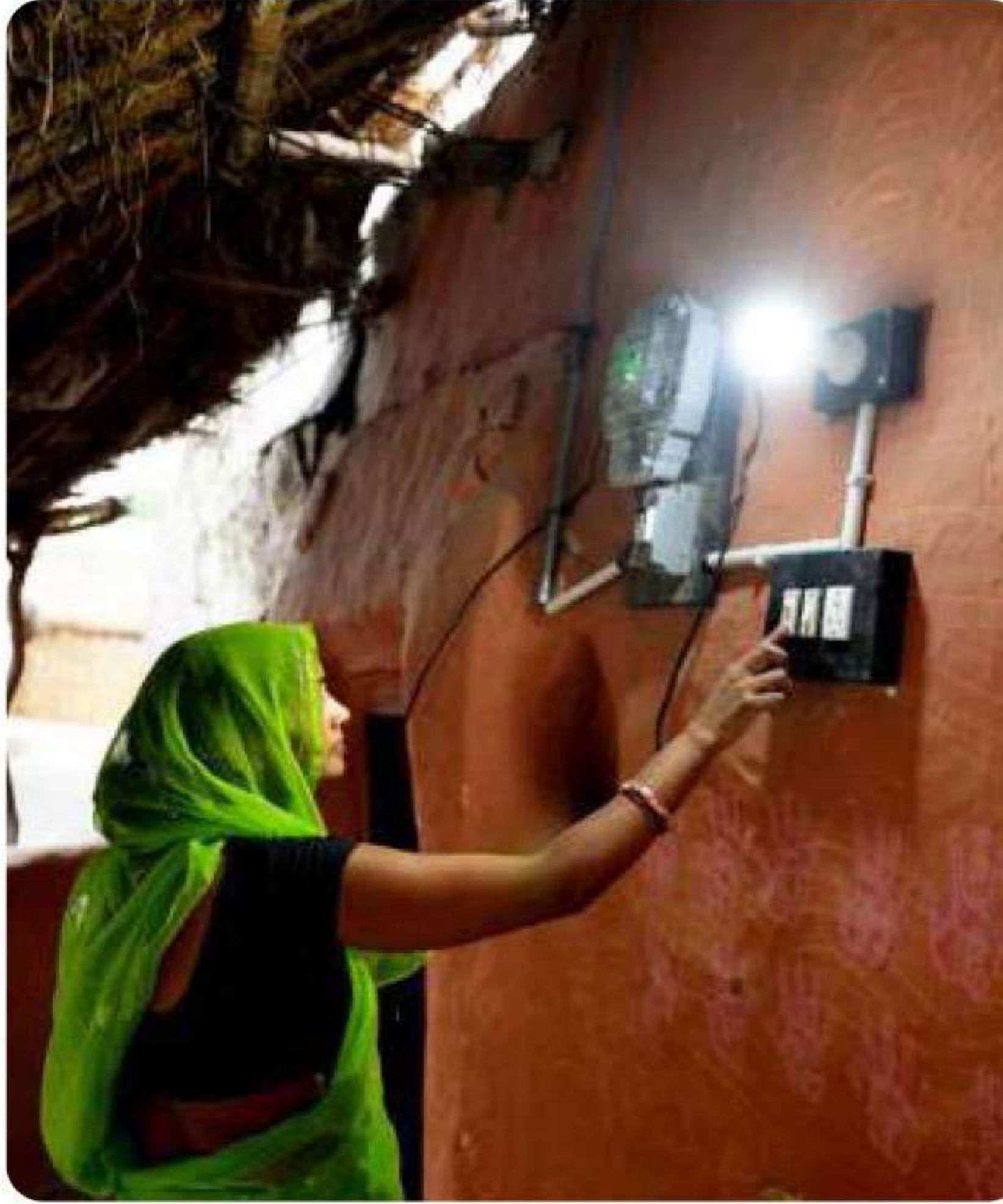
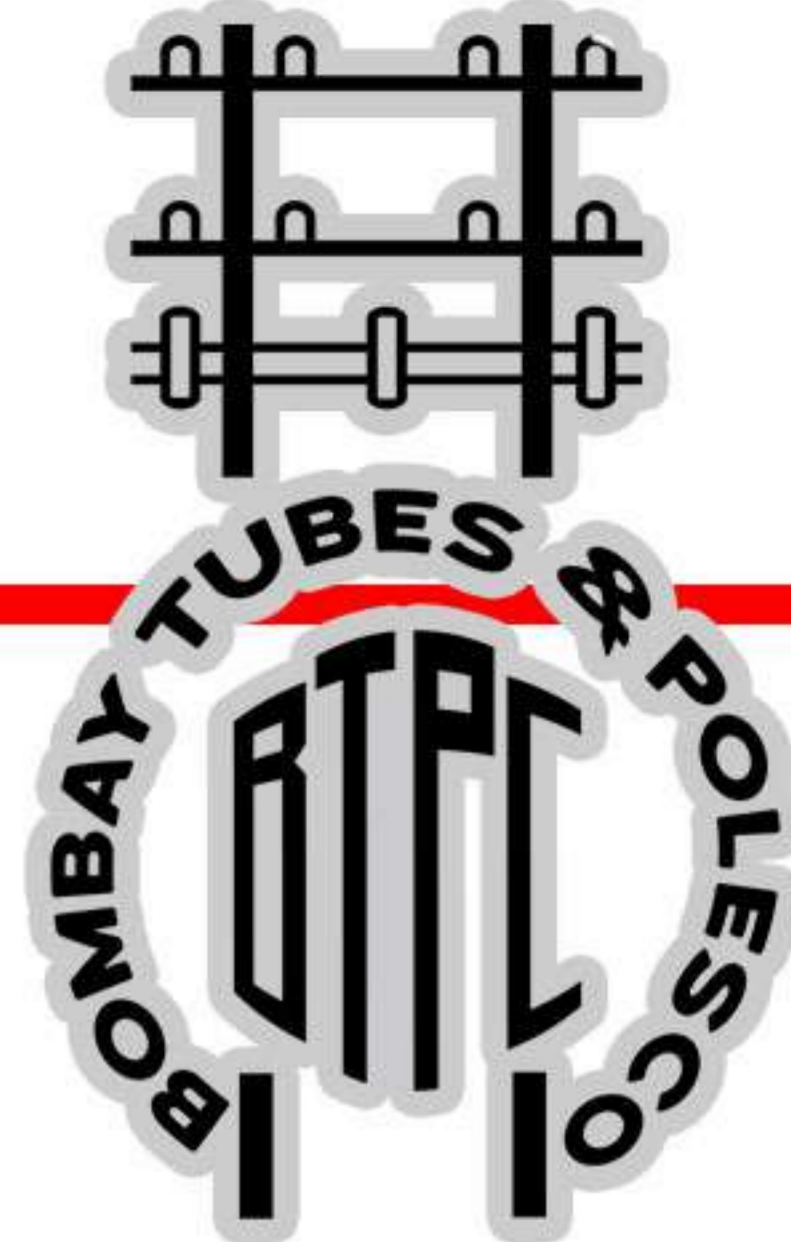
- Urban & Rural Electrification
- Substation & Transmission
- Metro Electrification
- Building Electrification
- Solar EPC – Utility Scale
- Civil Construction

Education



- Girls residential school, Neemrana
- K- 12 day school, Gurgaon

LINES OF BUSINESS



Substation & Transmission

Rural & Urban Electrification

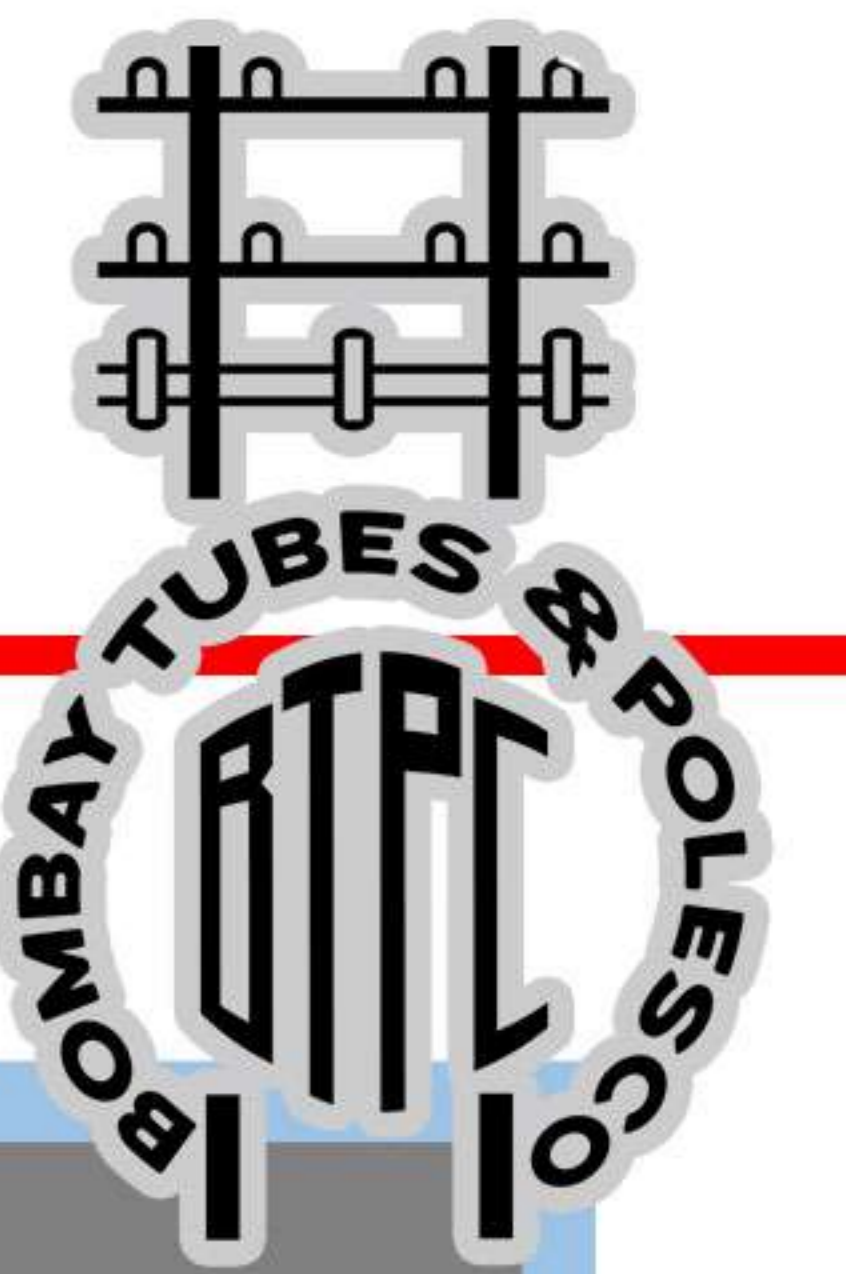
Metro Rail Electrification

Building Electrification

Solar Land Based EPC

Civil Construction

REFERENCE PROJECTS: SUBSTATION & TRANSMISSION



Punj Lloyd, 2 x 66 KV Switchyard, Mansa, Punjab

Scope of work included 2 x 66 KV switch yard including SITC of transformers, HV panels, Cabling and other allied works for 40 MW of Solar Power project for M/s Surya Punj Lloyd Ltd. in Mansa Punjab

Value-43.5 cr.

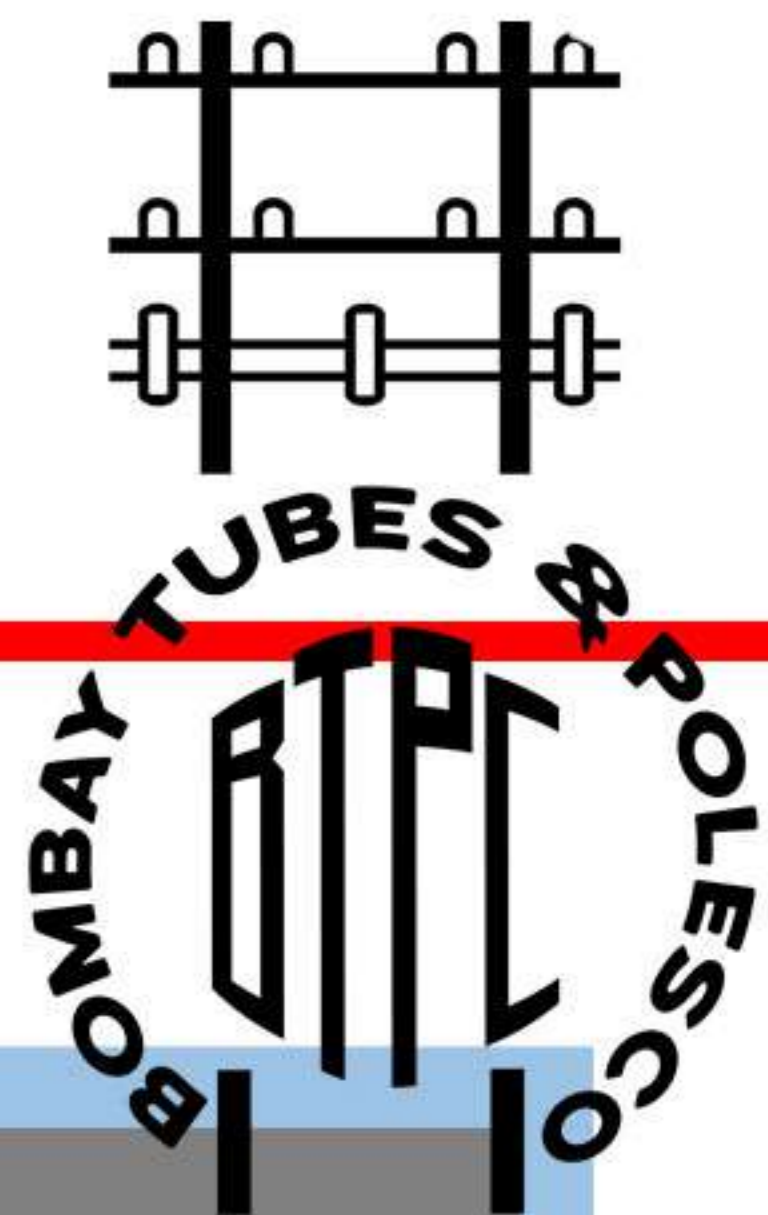


220 KV Grid Substation Godda & Garwa (Jharkhand)

Scope of work included construction, design, engineering & supply of material/equipments, erection, testing & commissioning of 220/132/33 KV Grid Substation at Godda & Garwa.

Value: 139 cr.

REFERENCE PROJECTS: SUBSTATION & TRANSMISSION

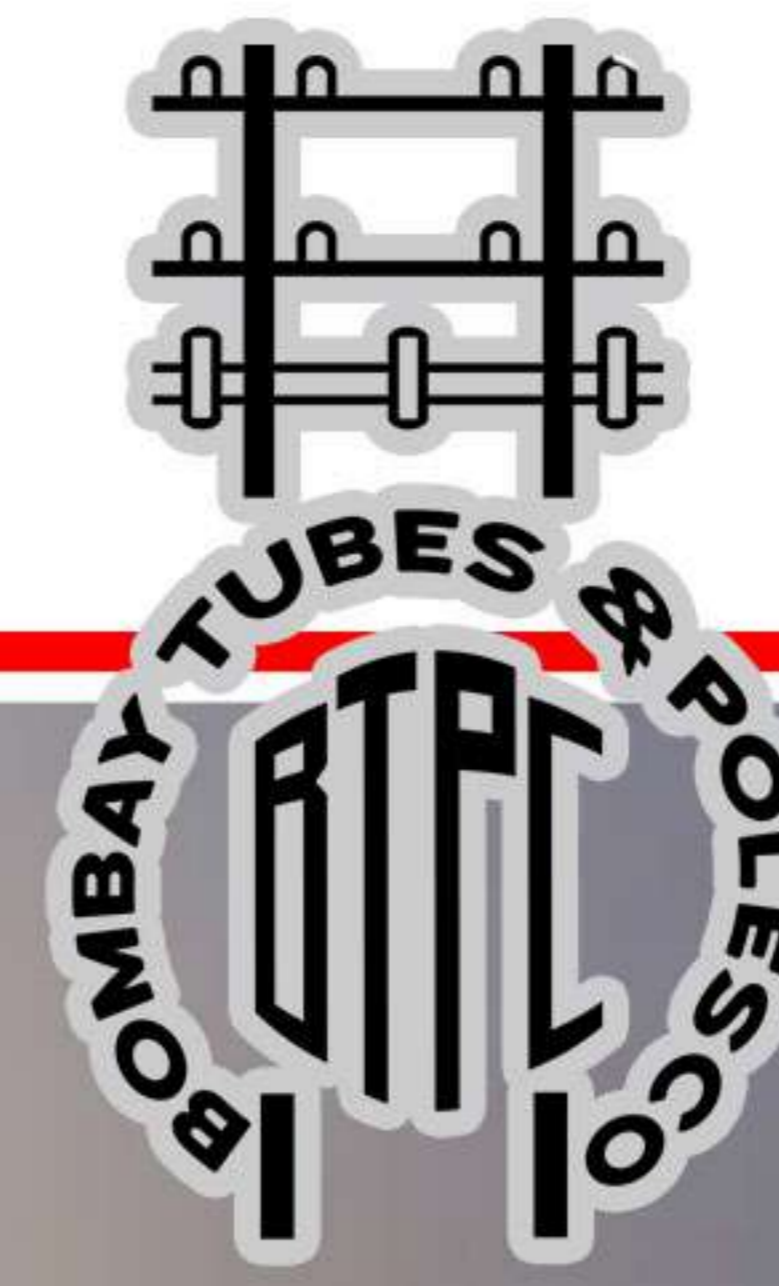


220 KV Substation Amethi (Uttar Pradesh)

Scope included 40 MVA Transformer Bays including 220 KV & 132 KV sides, 10x220KV Feeder Bay, 220 KV Bus Coupler Bay, 8x33KV Feeder Bays, 33KV Bus Coupler Bay, Control Room & Staff Quarters.

Value: 31 cr.

RURAL & URBAN ELECTRIFICATION: WHAT WE DO



GPS/Foot survey for HV & LT Lines including identification of BPL customers

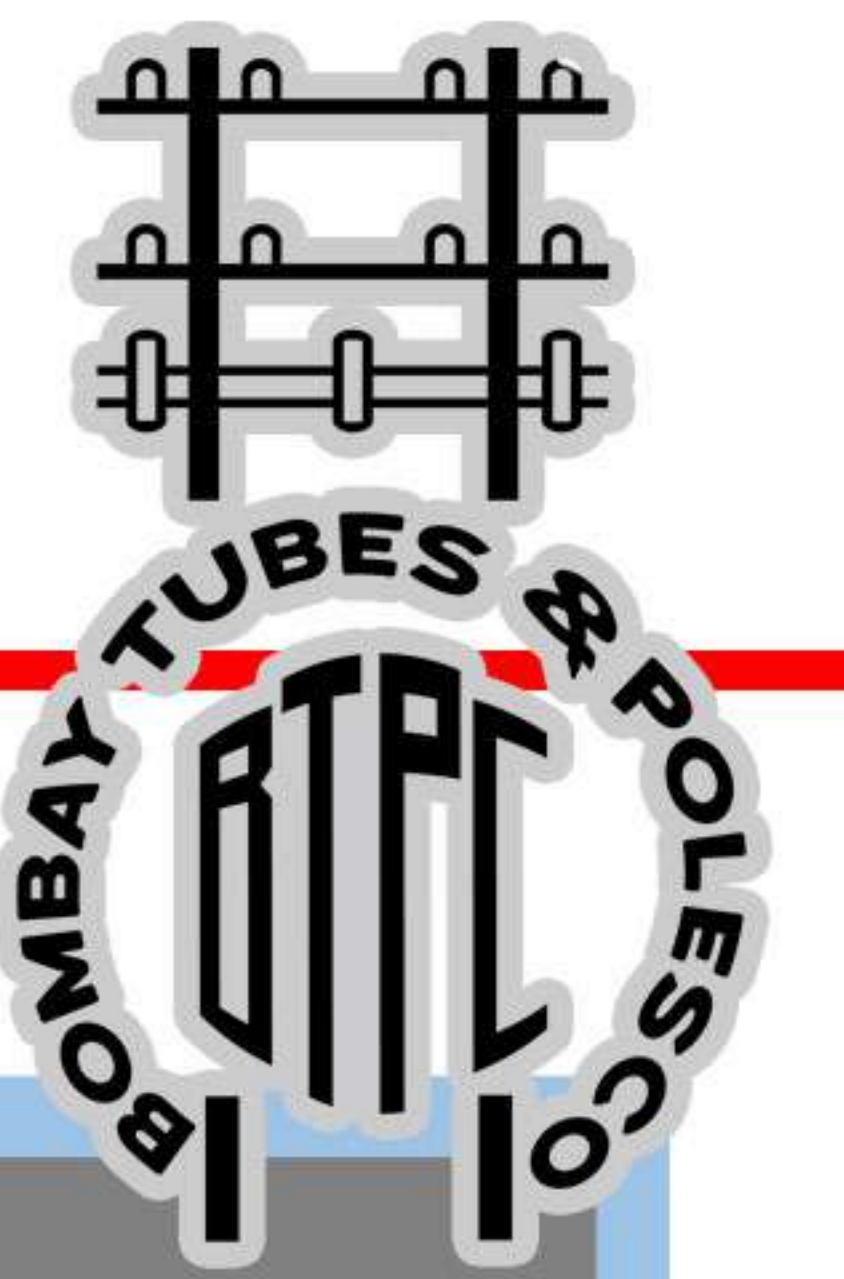
Construction of HV, LT Overhead Lines & UG Cables

Installation of Power & Distribution Transformers

Electrical service connection to last mile connection



REFERENCE PROJECTS: RURAL ELECTRIFICATION



Rural Electrification (RGGVY 12th Plan), Sitapur

New / augmentation 33/11 KV Grid Substation, New 33 KV, 11 KV Lines, LT Lines and Bay Extension, 11/0.433 KV Distribution Transformer Substations, LT Service connection

Value: 73 Cr

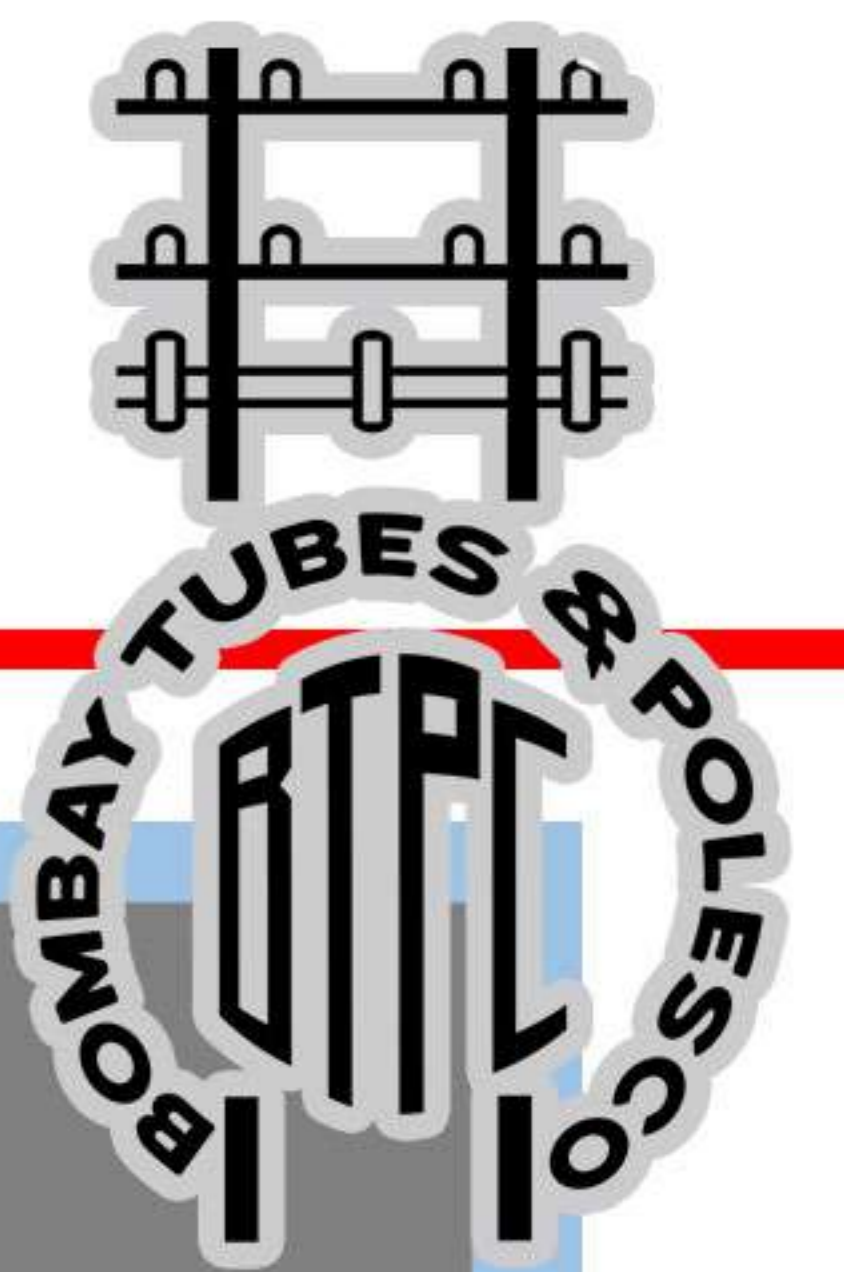


Rural Electrification (RGGVY 12th Plan), Shravasti

New / augmentation 33/11 KV Grid Substation, New 33 KV, 11 KV Lines, LT Lines and Bay Extension, 11/0.433 KV Distribution Transformer Substations, LT Service connection

Value: 56 Cr

REFERENCE PROJECTS: RURAL ELECTRIFICATION



Jharkhand Bijli Vitran Nigam Limited (JBVNL)

Rural Electrification works of GARHWA PACKAGE-2 & 4 RE Works for Package 03 in JSBAY scheme Underground cabling in Deoghar

Value: 321.43 Cr

Bihar Power Distribution Company Ltd.

Rural Electrification works of Darbhanga Circle
Rural Electrification works of Gaya Circle

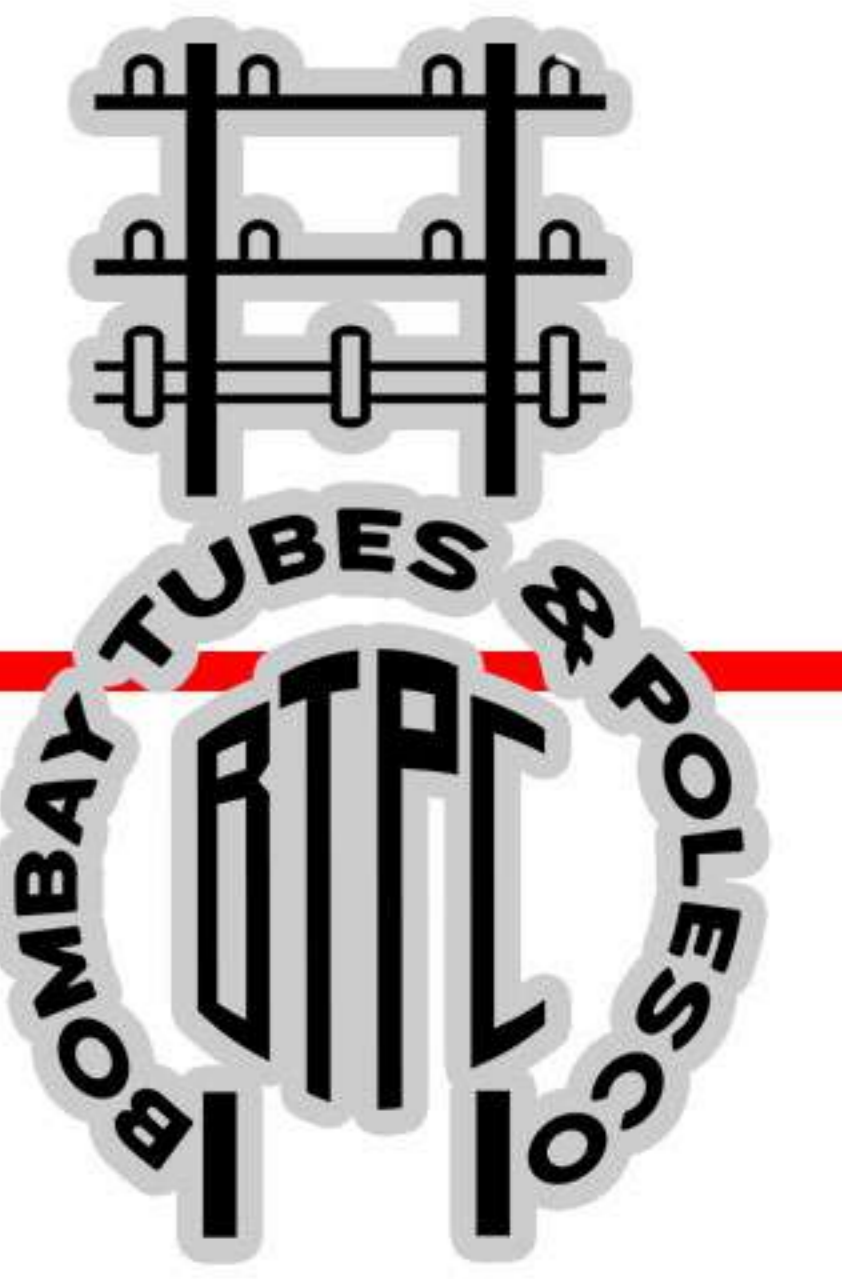
Value: 514.5 Cr

Maharashtra State Electricity Distribution Company.

IPDS WORKS OF Chandrapur Circle, Jalgaon zone & Dhule circle
Rural Electrification works of Gondia, Yawatmal, Chandrapur & Dhule circle.

Value: 349.9 Cr

REFERENCE PROJECTS: URBAN ELECTRIFICATION



Paschimanchal Vidyut Vitaran Nigam Ltd., Rampur, UP

Construction of New 11 KV feeders, conversion of existing overhead LT lines to underground cable network & installation of Distribution Transformers for improvement of electric supply and distribution network.

Value: 73 Cr

BUILDING ELECTRIFICATION: WHAT WE DO



Indoor & Outdoor Substation 33/11 kVA

SITC of HT & LT Panels

Internal & External Electrification



REFERENCE PROJECTS: BUILDING ELECTRIFICATION



IIM, Kashipur

Complete electrical work for IIM, Kashipur awarded by Shapoorji & Pallonji Ltd. Scope included 10 MVA Compact Substation, DG sets, 100 Km of HT & LT cable & internal & external electrification.

Value: 40 cr.



IIT, Hyderabad

Complete Electrical work for IIT awarded by L&T Ltd. Scope included 28 MVA Transformers, 150 Km of HT & LT cable & internal & external electrification.

Value: 25 cr.

REFERENCE PROJECTS: BUILDING ELECTRIFICATION

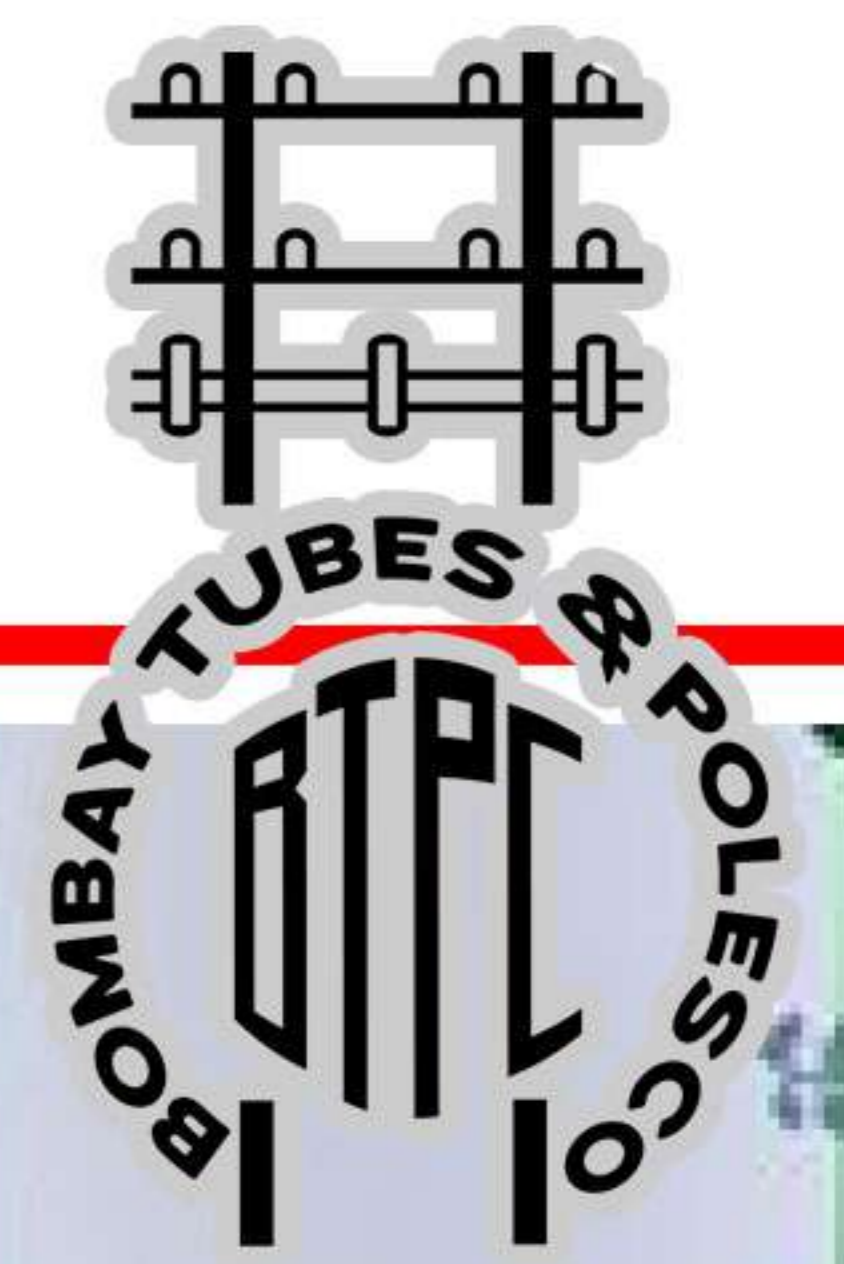


Amazon, Bilaspur (Haryana)

SITC of various electrical equipment including transformers, HV/LV panels, cabling works, internal electrification and other allied works for their warehouse

Value: 10 cr.

METRO ELECTRIFICATION: WHAT WE DO



Internal & External Electrification

Fire Detection & Suppression Systems

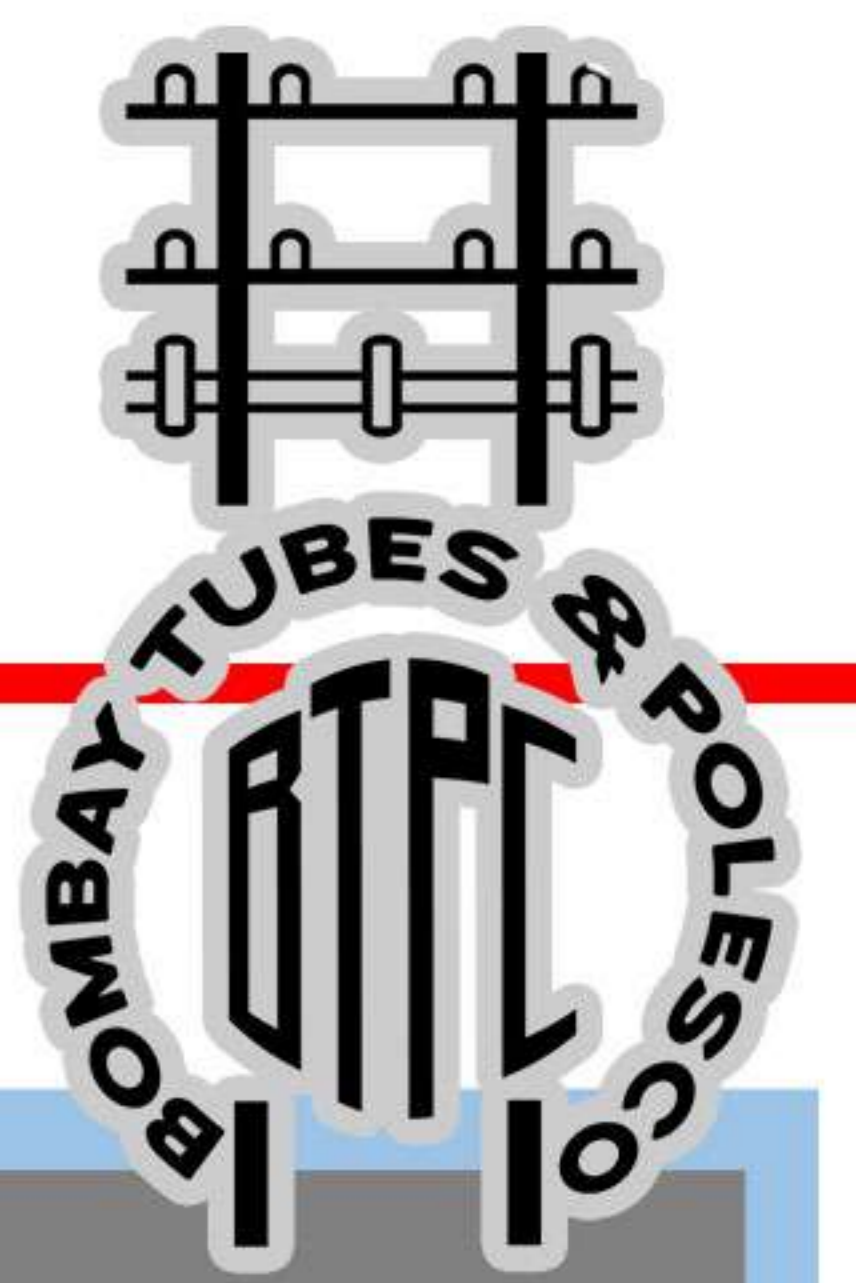
Air-conditioning Systems

Cabling/Busducts/ Earthing & Lightning Systems

EOT Cranes



REFERENCE PROJECTS: METRO ELECTRIFICATION



Kochi Metro Project (KMRC), Kochi, Kerala

Bombay Poles was awarded E & M work for Kochi Metro Rail project by DMRC. The scope of work includes SITC of DG Sets, Electrical panels, lighting systems, EOT cranes, Firefighting, plumbing & HVAC system for 22 metro stations and 1 Depot

Value: 73.5 cr.

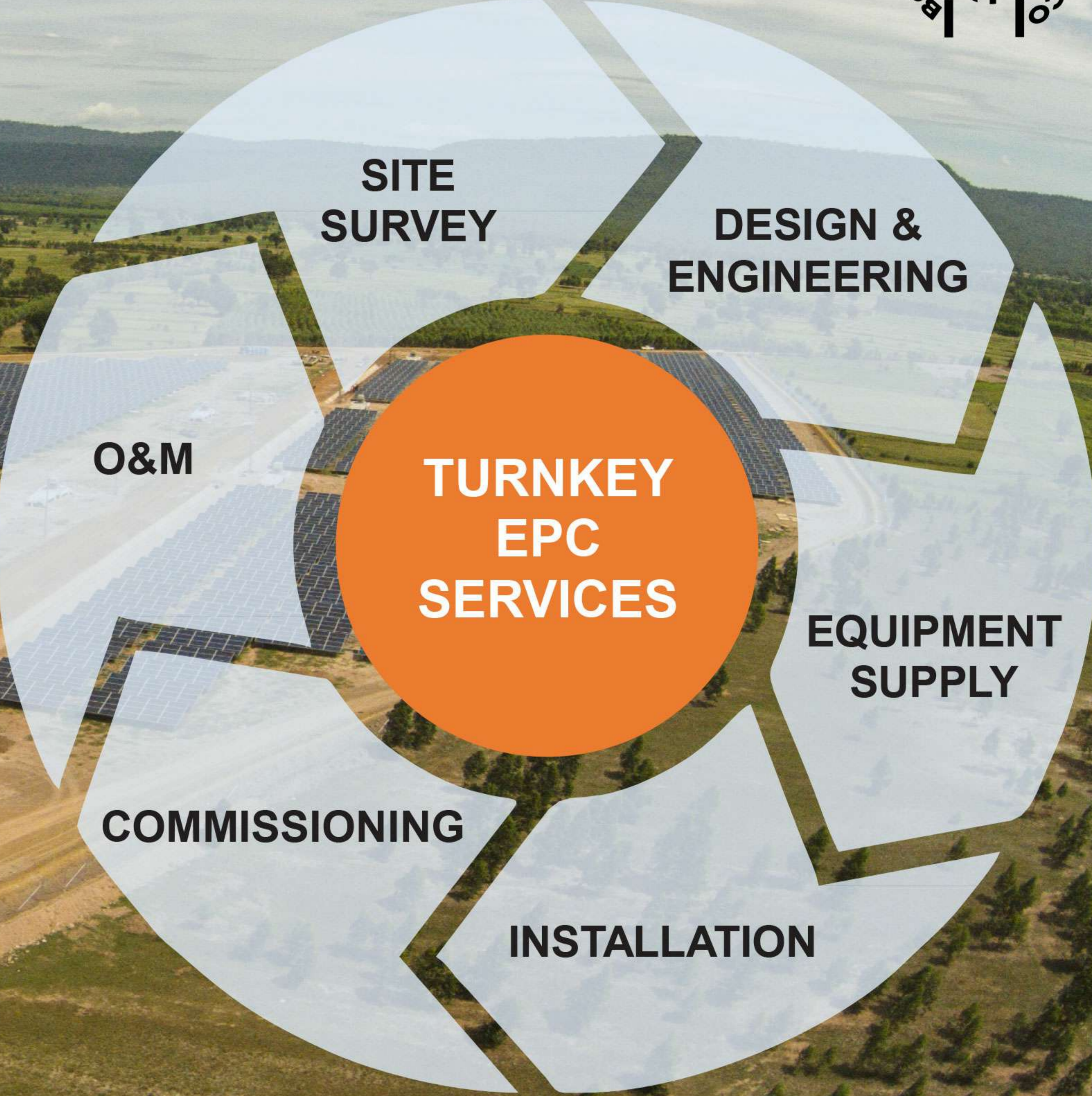
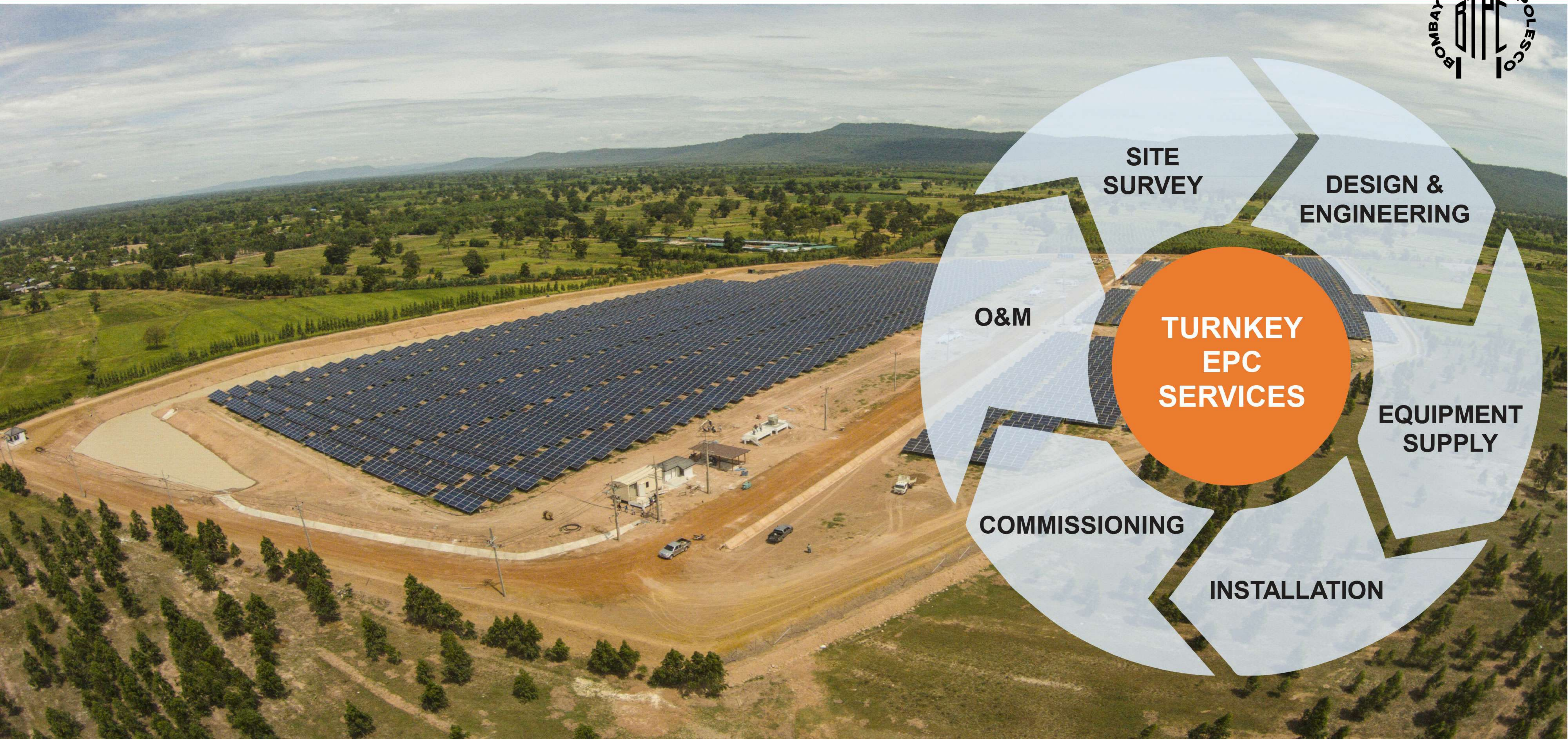
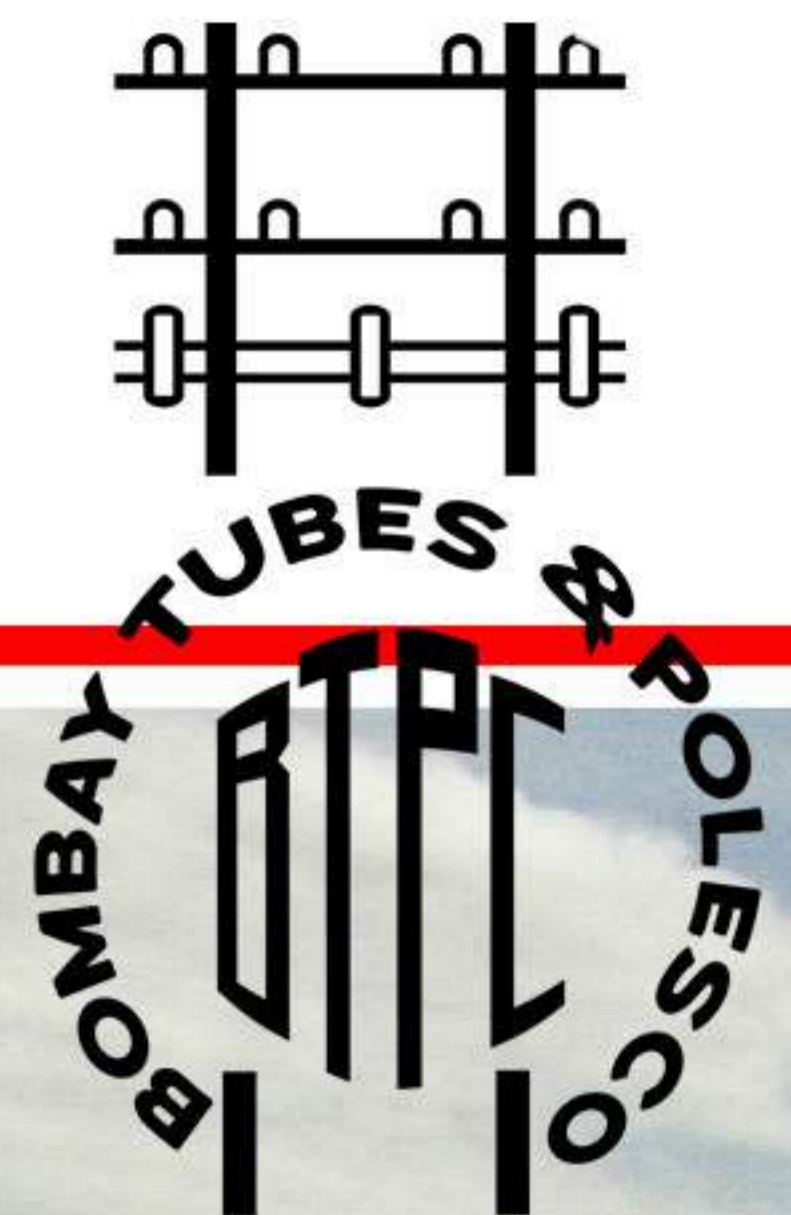


Delhi Metro Rail Project (DMRC), Yamuna Bank, Delhi

Company was awarded the E&M work for expansion of Yamuna Bank Depot. The scope of work includes Supply, Installation, Testing & Commissioning of E&M, Fire Detection, Fire Suppression, EOT Crane, Compressor and HVAC System.

Value: 3.05 cr.

SOLAR LAND BASED EPC: WHAT WE DO



REFERENCE PROJECTS: SOLAR LAND BASED EPC



750+ MW Portfolio



100 MW, NLC, Tamil Nadu



65 MW, Bhadla, Rajasthan



55 MW, IREDA, Kerala



42 MW, Punj Lloyd, Mansa, Punjab

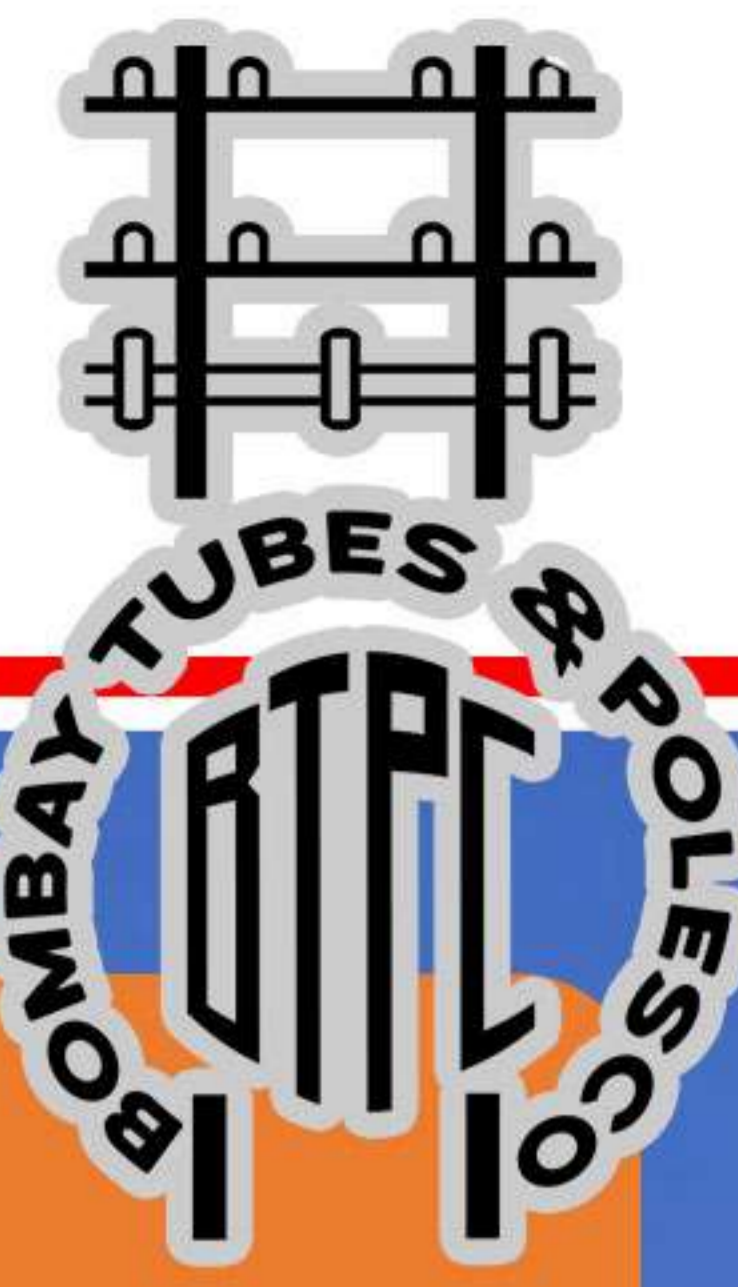


34 MW, Green Urja (P) Ltd., Mahoba, UP



10 MW Talcher, Odisha

CIVIL CONSTRUCTION: WHAT WE DO



Complete end-to-end Civil infrastructure solution encompassing all modules of engineering

Competence in providing smart, purposeful and innovative sustainable design and construction solutions



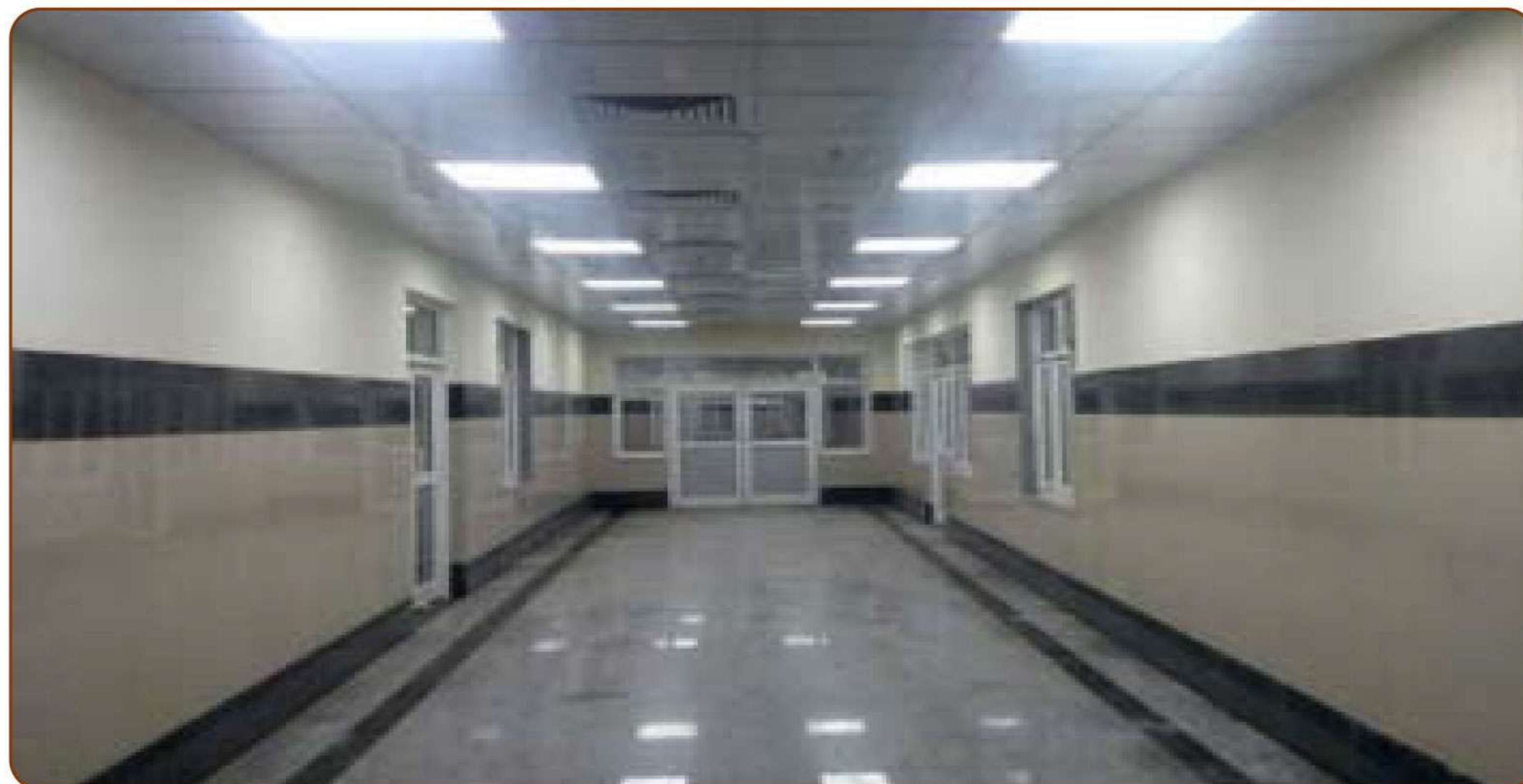
REFERENCE PROJECTS: CIVIL CONSTRUCTION



Knowledge Boulevard, Emirates Technologies Pvt. Ltd., Noida, U.P.

Civil & structural construction work, landscaping, Internal & External electrification including DG sets and substation, fire fighting, plumbing, HVAC, Public address system, and other allied works.

Value: 132 cr.

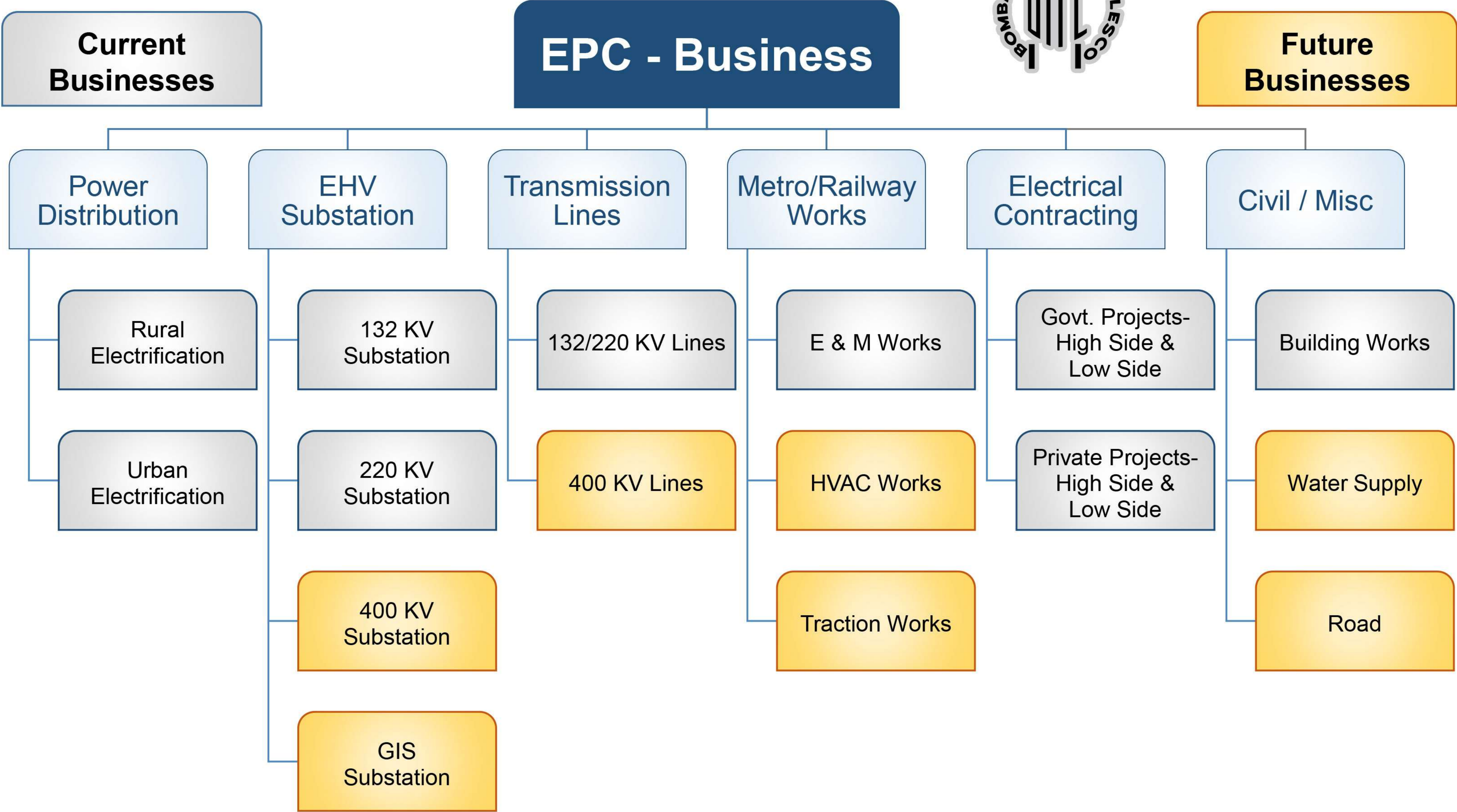


Children Hospital, UPRNN, Gorakhpur, U.P.

Construction of 500 bedded child health institute including all auxiliary services like firefighting, Lift, substation, DG Sets, Internal/External Electrification, Medical Equipment's, OT etc.

Value: 144 cr.

FUTURE GROWTH/BUSINESSES



SCOPE OF SERVICES

DESIGN



- Cost Estimation
- Project Feasibility Studies
- Regulatory Permissions
- Site Analysis
- Technology & Infrastructure

ENGINEERING



- Front-end Engineering
- Planning & Scheduling
- Safety Planning
- System Integrator

PROCUREMENT



- Contracts Management
- Raw Material Purchase
- Vendor Sourcing
- Quality Controls
- Storage Controls

CONSTRUCTION



- Hiring & Training
- Workforce Management
- Civil Works
- Equipment & Tools Supply
- Steel Fabrications
- Quality Control
- Site Safety

COMMISSIONING

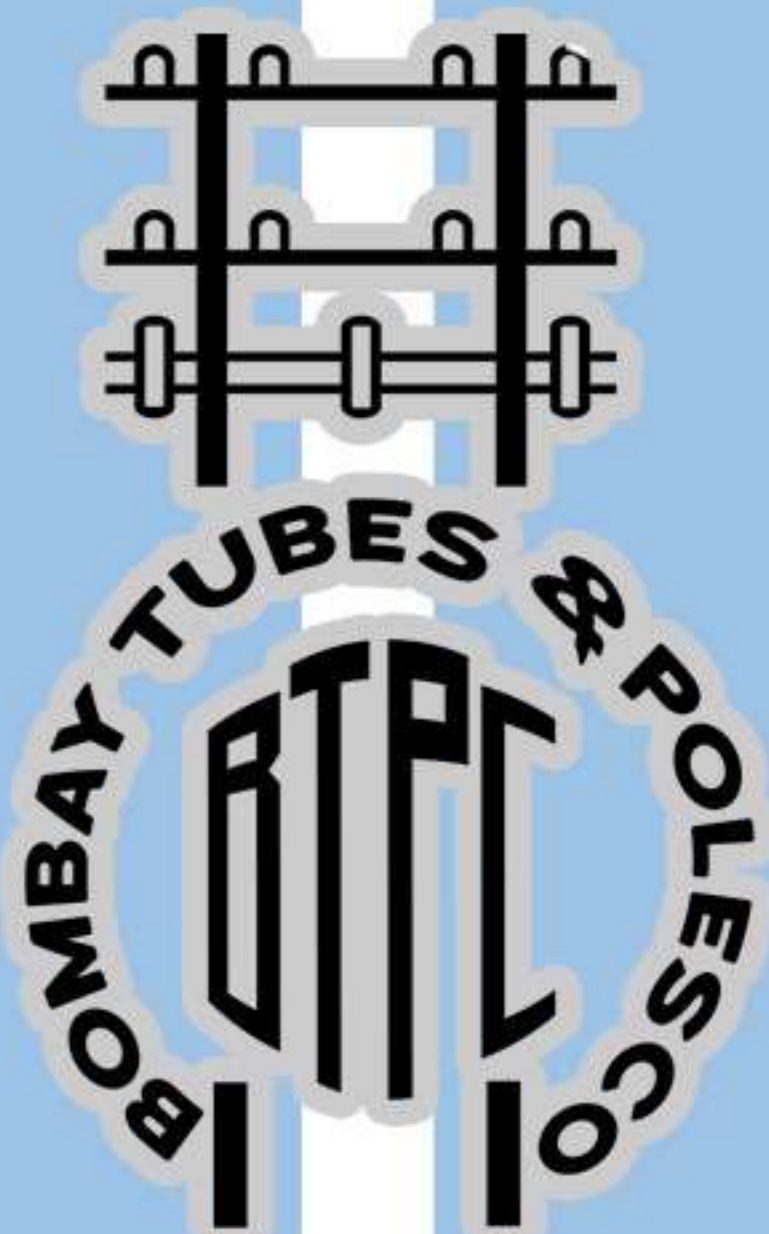


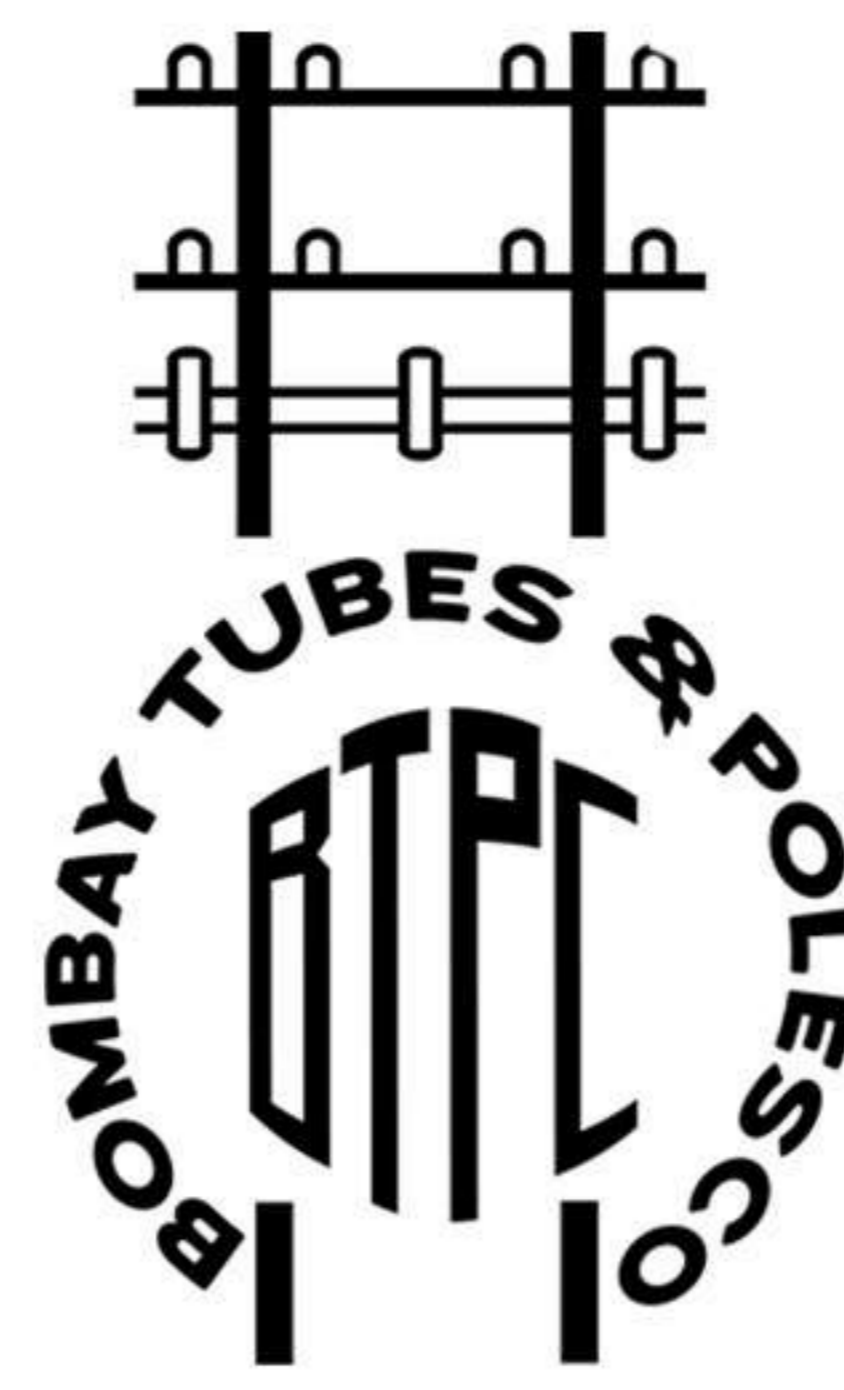
- Trial Runs
- Quality Checks
- Safety Protocols
- Certifications

OPERATION MAINTENANCE



- Preventive Maintenance
- Performance Management
- Plant Maintenance





BOMBAY TUBES & POLES CO.

REGISTERED CORPORATE OFFICE

**PLOT NO 100 , 2 ND LANE ,
DARUKHANA BEHIND BRITTANIA BISCUIT ,
MAZGOAN MUMBAI :- 400 010**

IQBAL NATHANI

**MANAGING DIRECTOR
MOBILE NO: 9820310123**

EMAIL:

info@bombaypoles.com

FACTORY ADDRESS

**ZAIN NATHANI 2ND LANE,
DARUKHANA, MAZGAON,
MUMBAI - 400010, MAHARASHTRA, INDIA**

ZAIN NATHANI

**DIRECTOR
MOBILE NO: 9820293211**

OFFICE NO.

022-23729802

OUR CLIENTS

